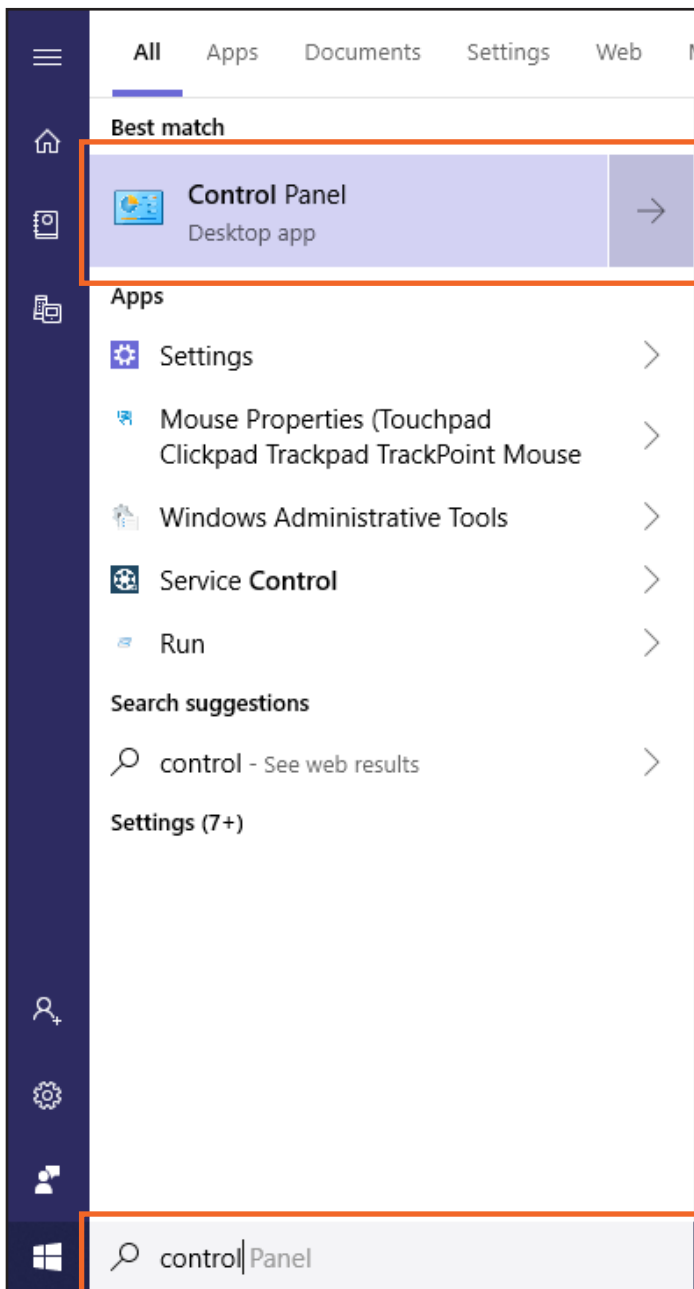


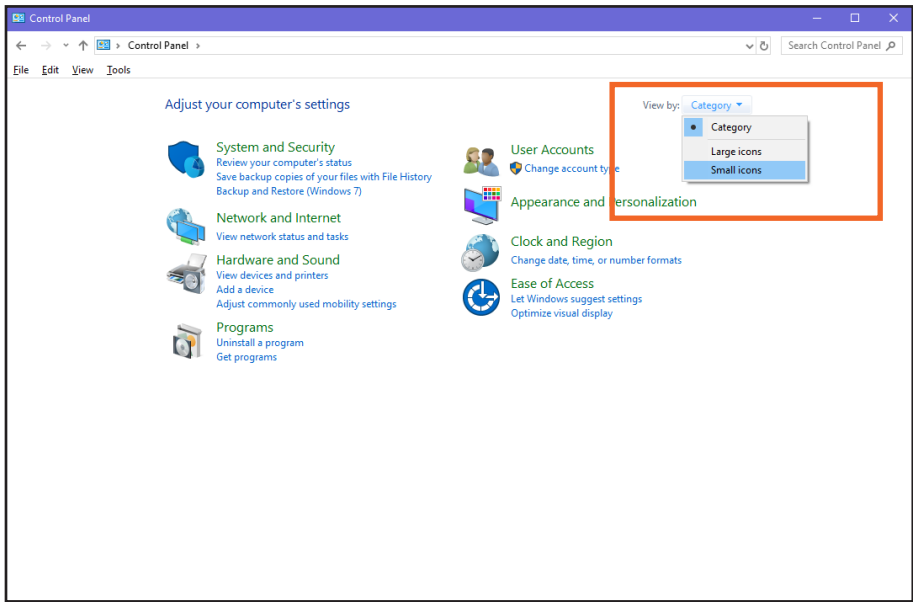
## How to set up your Endeavor Email with **Microsoft Outlook**

Below you will find detailed steps on how to get your email set up and ready to go. We will be using the email “speedgeeks@iendeavor.com” for examples. This set of instructions will also work for ccrtc emails by simply changing the “@iendeavor.com” to “@ccrtc.com”

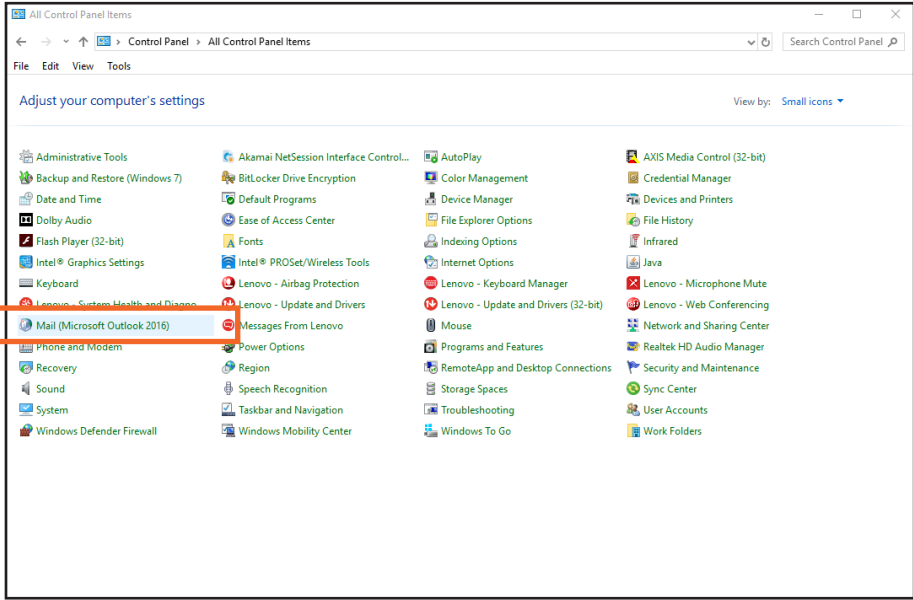


Start by locating your **Control Panel**.

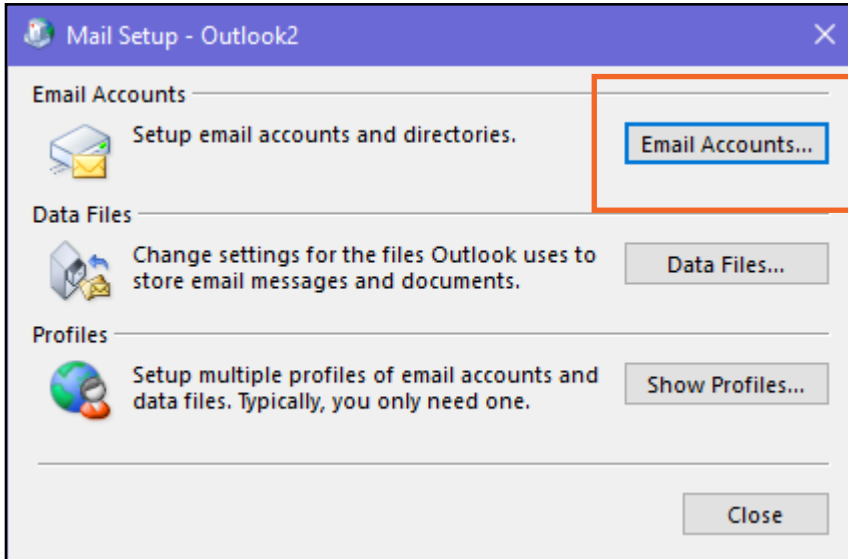
If you have Windows 10 you can search for it in the search bar located in the task bar.



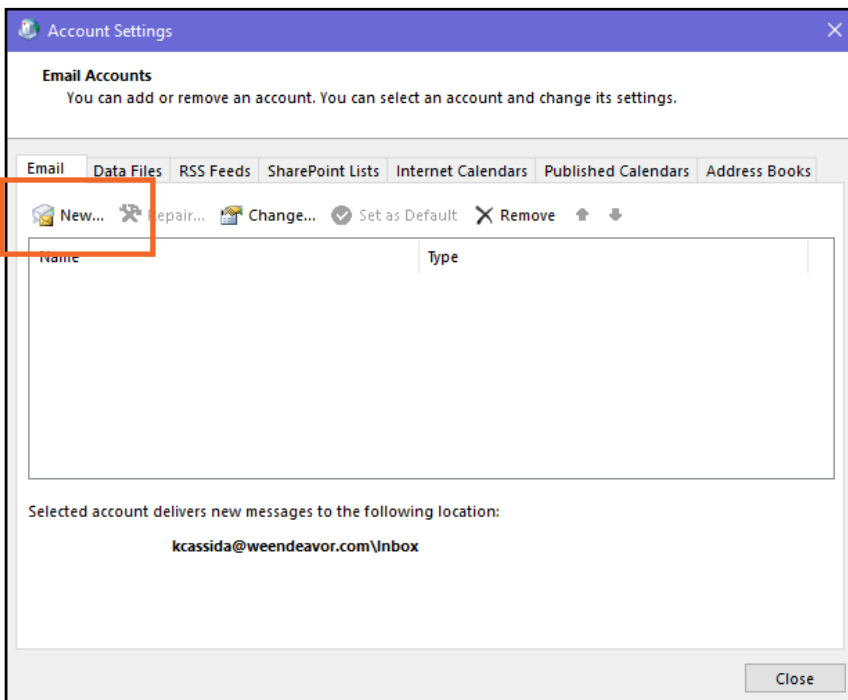
Next click the view by Category tab and make sure **“Small Icons”** is selected.



Next click the **“Mail (Microsoft Outlook)”** button.



Next click the **“Email Accounts”** button.



Next click the **“New”** button to begin adding your new account

**Add Account**

**Auto Account Setup**  
Manual setup of an account or connect to other server types.

**Email Account**

Your Name:   
Example: Ellen Adams

Email Address:   
Example: ellen@contoso.com

Password:   
Retype Password:   
Type the password your Internet service provider has given you.

**Manual setup or additional server types**

< Back **Next >** Cancel Help

Next click the **“Manual setup or additional server types”** dot and then press the next button.

**Add Account**

**Choose Your Account Type**

**Office 365**  
Automatic setup for Office 365 accounts

Email Address:   
Example: ellen@contoso.com

**POP or IMAP**  
Advanced setup for POP or IMAP email accounts

**Exchange ActiveSync**  
Advanced setup for services that use Exchange ActiveSync

< Back **Next >** Cancel Help

Next click the **“POP or IMAP”** dot and then press the next button.

**POP and IMAP Account Settings**  
Enter the mail server settings for your account.

**User Information**

1. Your Name: Speed Geeks

2. Email Address: speedgeeks@iendeavor.com

**Server Information**

3. Account Type: IMAP

4. Incoming mail server: mail.iendeavor.com

5. Outgoing mail server (SMTP): smtp.iendeavor.com

**Logon Information**

6. User Name: speedgeeks@iendeavor.com

7. Password: \*\*\*\*\*

8.  Remember password

Require logon using Secure Password Authentication (SPA)

**Test Account Settings**

We recommend that you test your account to ensure that the entries are correct.

Test Account Settings ...

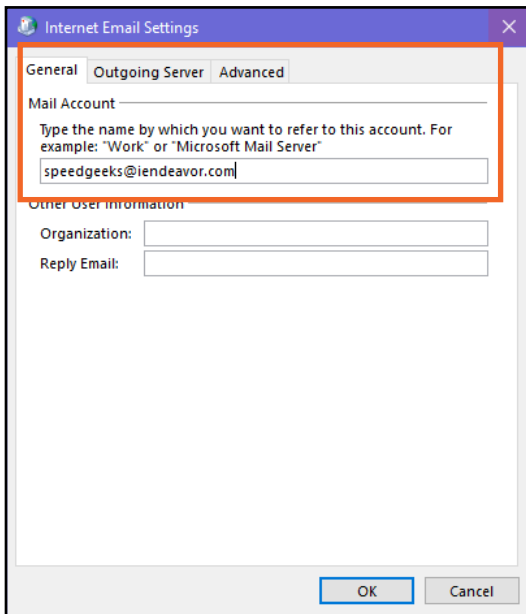
Automatically test account settings when Next is clicked

Mail to keep offline: All

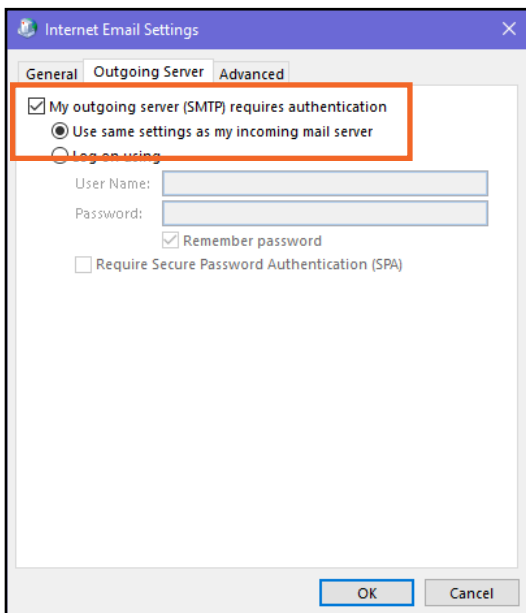
9. More Settings ...

< Back   Next >   Cancel   Help

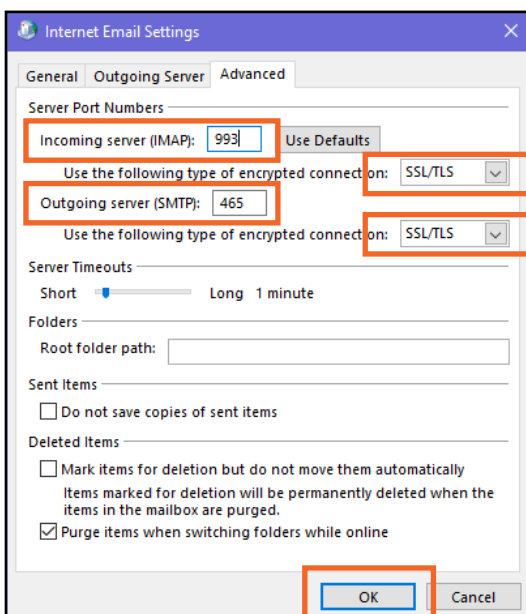
1. Enter your name. This is the name that other people will see when you send them an email.
2. Enter your email address. Here is where you see we used a “@iendeavor” but this will also work with an “@ccrtc” email address.
3. Make sure you have “IMAP” set as the “Account Type” in the drop down box.
4. Enter in “mail.iendeavor.com” or “mail.ccrtc.com” based on your email address, as the “Incoming mail server”.
5. Enter in “mail.iendeavor.com” or “mail.ccrtc.com” based on your email address, as the “Outgoing mail server”.
6. Enter your full e-mail address as the “User Name”.
7. Enter your e-mail account’s “Password”.
8. Check the box to “Remember Password”.
9. Click the “More Settings” button.



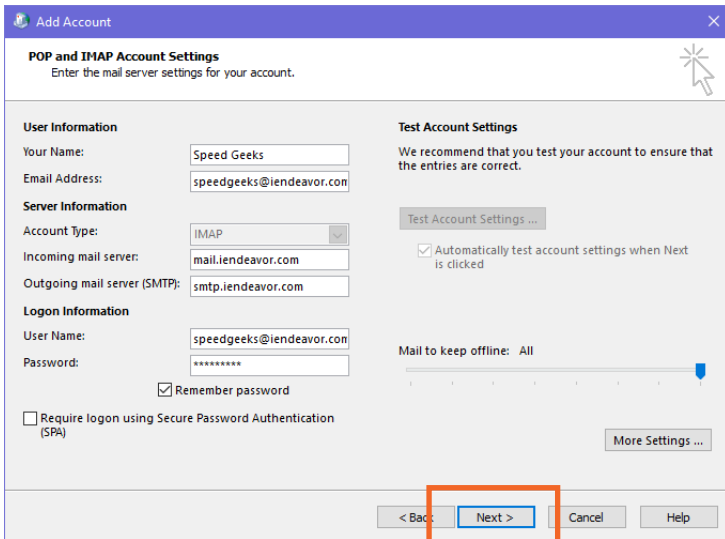
In the **“General”** tab make sure the mail account is the same e-mail address as your e-mail you are trying to set up.



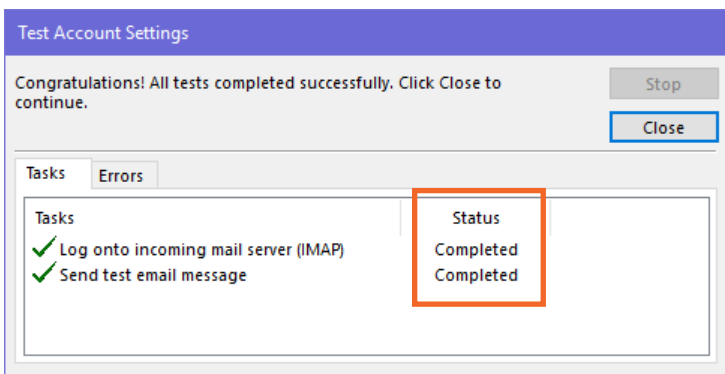
In the **“Outgoing Server”** tab make sure to check the box for **“My Outgoing Server (SMTP) Requires Authentication”** and that **“Use same settings as my incoming server”** is selected.



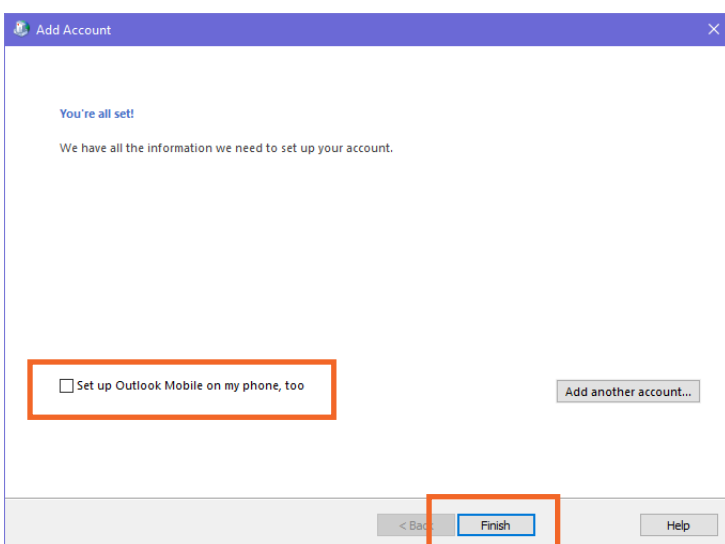
In the **“Advanced”** tab Change the following settings:  
-Incoming server (IMAP) **993**  
-Outgoing server (SMTP) **465**  
-Make sure that **SSL/TLS** is selected for both of these  
-Then click OK



Click the **“Next”** button at the bottom to make sure your settings are working correctly.



You will now get a window like this and the tests will say **“Completed”** or **“Failed”**. This will now test the settings to see if it works and may take a few moments to run. If either say failed go back and double check your settings from the previous steps.



If both test completed you are now done and can click finish. Enjoy using your email.